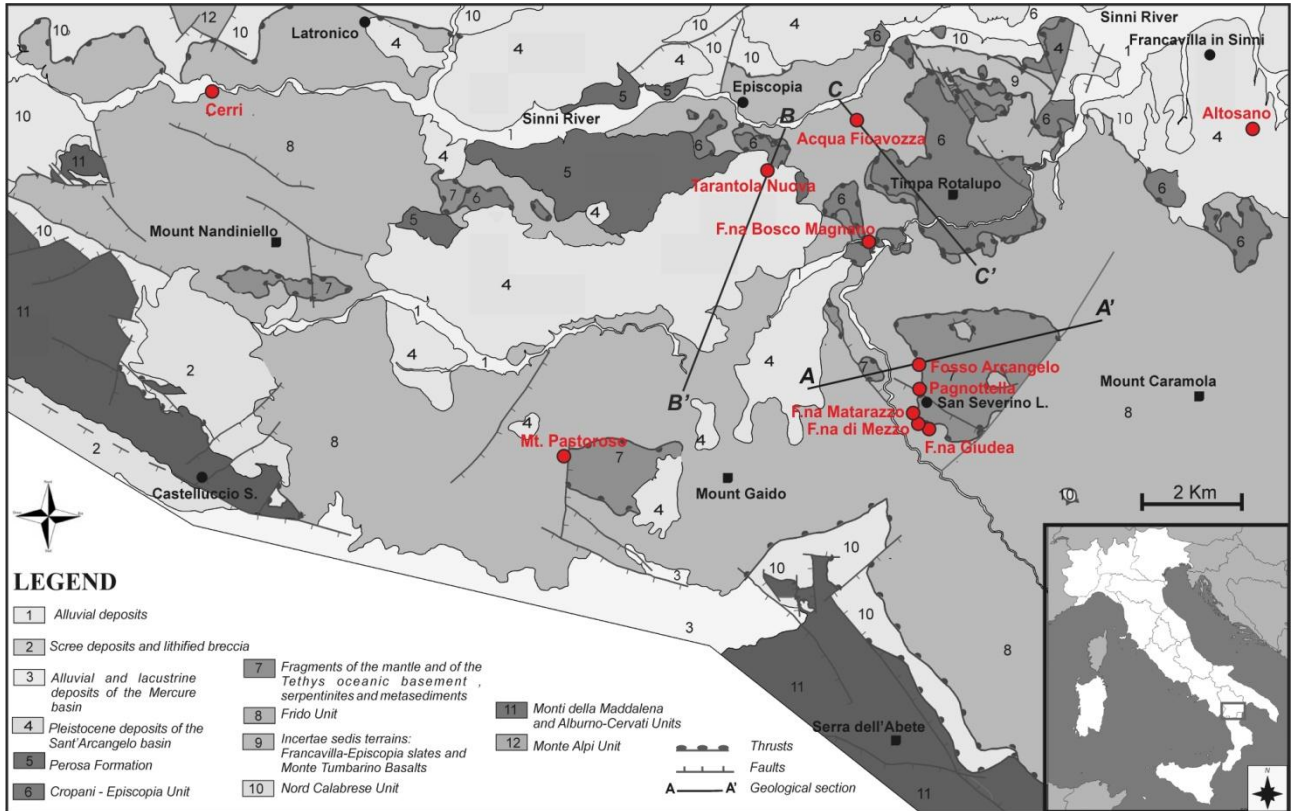
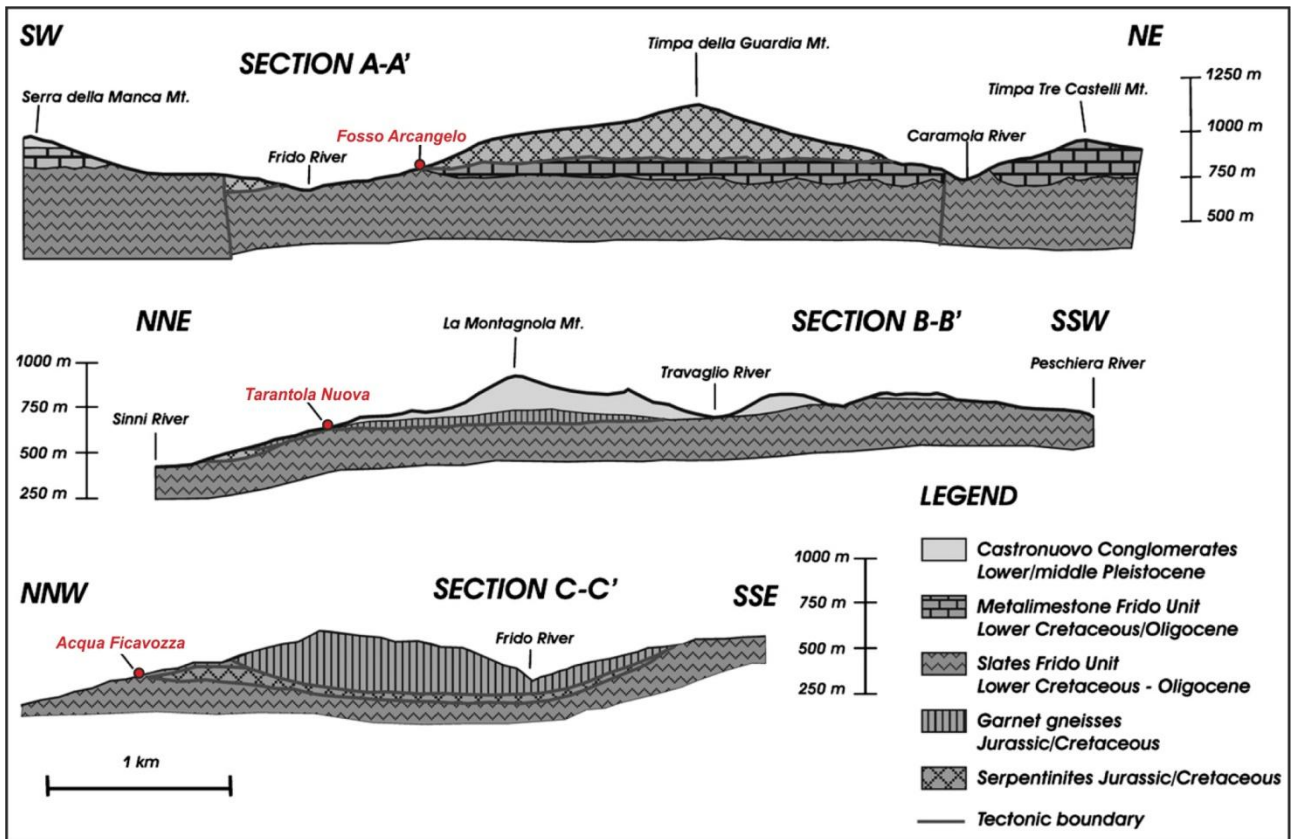


CRITERIA

Cr(VI) Impacted water bodies in the Mediterranean: Transposing management options for Efficient water Resources use through an Interdisciplinary Approach

Basic conceptual model of Pollino area- Italy





Geological cross section with corresponding water points.

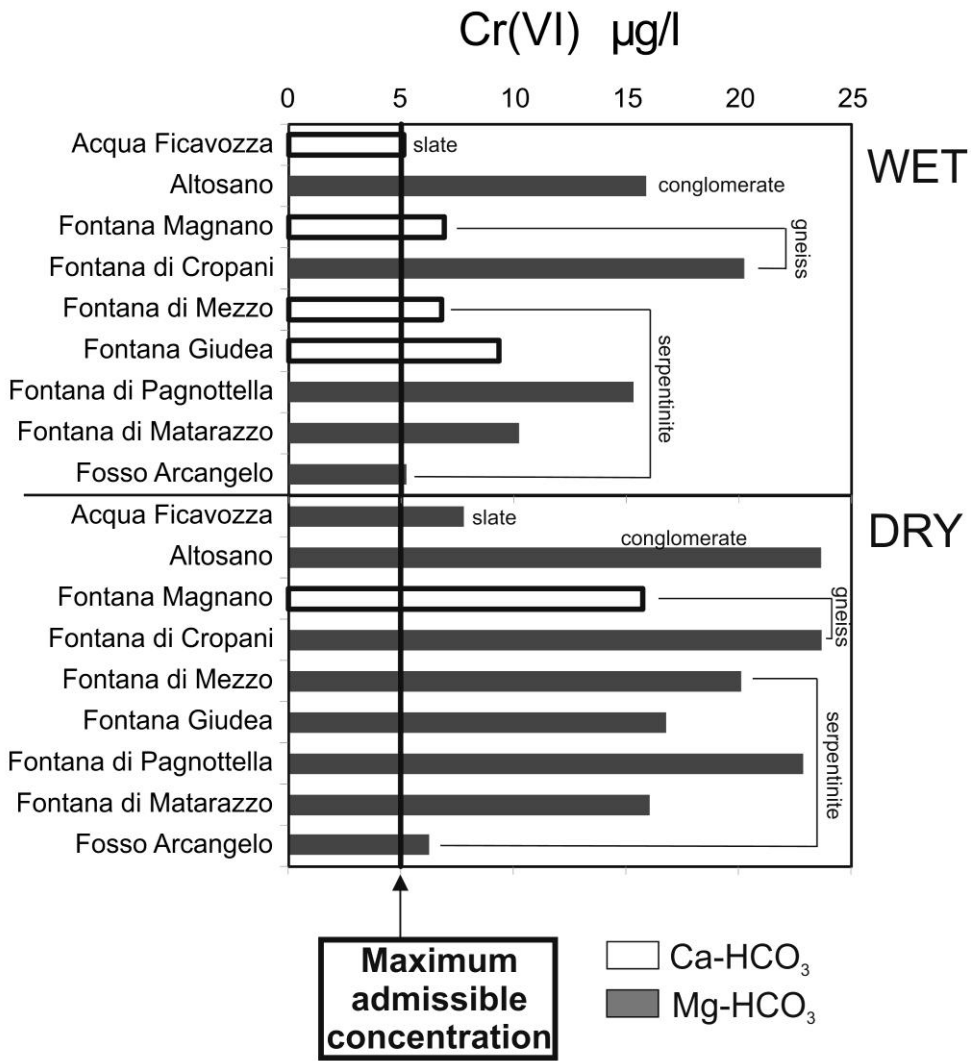


Fig. 6

Cr(VI) distribution in springs where its concentration is above the detection limit ($1 \mu\text{g L}^{-1}$). In these nine springs the Cr(VI) levels exceed the MAC of $5 \mu\text{g L}^{-1}$ either in the wet and season and in the dry season

| WET | Cr(VI) | lithology |
|------------------------|---------------|------------------|
| | | |
| Fosso Arcangelo | 5.23 | serpentine |
| Fontana di Matarazzo | 10.24 | serpentine |
| Fontana di Pagnottella | 15.32 | serpentine |
| Fontana Giudea | 9.34 | serpentine |
| Fontana di Mezzo | 6.79 | serpentine |
| Fontana di Cropani | 20.24 | gneiss |
| Fontana Magnano | 6.91 | gneiss |
| Altosano | 15.88 | conglomerate |
| Acqua Ficavozza | 5.11 | slate |

| DRY | Cr(VI) | lithology |
|------------------------|---------------|------------------|
| | | |
| Fosso Arcangelo | 5.95 | serpentine |
| Fontana di Matarazzo | 16.05 | serpentine |
| Fontana di Pagnottella | 22.87 | serpentine |
| Fontana Giudea | 16.78 | serpentine |
| Fontana di Mezzo | 20.12 | serpentine |
| Fontana di Cropani | 23.69 | gneiss |
| Fontana Magnano | 15.74 | gneiss |
| Altosano | 23.67 | conglomerate |
| Acqua Ficavozza | 7.80 | slate |